

Guide to DataPaq Select Integration

Your Source for Product Information

Product Release 1.0 – April 25, 2004

Document Date – April 12, 2004



Special Notices

The following terms used in this document are protected by copyright and trademark laws:

- CNET Channel and DataSource are registered trademarks of CNET Networks, Inc.
- Windows NT and Microsoft are registered trademarks of Microsoft Corporation
- MKS Toolkit is a registered trademark of MKS Inc.
- All other product names are registered trademarks of their respective owners

The information in this document is subject to change. Companies, names, and data used in examples are fictitious unless otherwise noted.

© Copyright Tech Data Corporation 2004. All rights reserved.

Tech Data Corporation
5350 Tech Data Drive
Clearwater, FL 33760

Table of Contents

Special Notices.....	1
Special Notices.....	2
Table of Contents.....	3
Technical Support.....	4
Introduction to DataPaq Select	5
Other E-commerce Services.....	6
Obtaining DataPaq Select Files	10
Automating the Download Process	10
File Availability.....	11
File Processing.....	12
Loading DataPaq Select Data	13
DataPaq Select Tables	13
DataPaq Select Pricing Tables.....	13
Entity-Relationship Diagram	14
Database Structures	15
Using DataPaq Select.....	17

Technical Support

For support related to DataPaq Select, call Tech Data's EC Support Services at 1-800-222-7926.

The toll-free support line is staffed from 8:00 am to 8:00 pm Eastern Time, Monday through Friday. If a problem occurs during non-support hours, you may email your inquiry to ecsupport@techdata.com. We will make every effort to provide a timely reply or solution.

Introduction to DataPaq Select

DataPaq Select is a source of consistent and accurate product data that will enable you to power your websites, both internal and external, with detailed IT product specifications and catalog images and enable functionality such as searching and browsing on the various attributes.

As a provider of IT products and services, you will want to tune and control this powerful method for influencing sales to your customers. Through creative use of the data provided in DataPaq Select and other Tech Data-provided services such as XML and EDI you will be able to achieve the greatest results and profitability.

By implementing DataPaq Select, you will be able to develop and implement publishing and search solutions on your web site:

- Publishable components are ready-to-use blocks of information that can be used in product tech-sheets, search results, and listings of comparable products. These components include:
 - A standardized description of the product
 - An image of the product
 - Marketing text gleaned directly from the manufacturer

Each one of these components can be used separately and formatted as needed to meet your interface requirements

On a daily basis, Tech Data will make available through its web site a set of files containing product information for all active products.

DataPaq Select is offered as a *pull service*, meaning that you will set up batch jobs in your environment that will pull or copy these files and apply the contents to your databases.

Data elements found in DataPaq Select include the following:

✓	Manufacturer name	✓	Product cube
✓	Manufacturer part number	✓	Product weight
✓	Tech Data part number	✓	Product note
✓	Tech Data part description	✓	Class identification
✓	MSRP	✓	Category identification
✓	Commercial price	✓	Product line
✓	Price promotion	✓	Vendor Drop Ship indicator
✓	Item effective date	✓	Model
✓	Tech Data item status	✓	Standardized description
✓	UPC number	✓	Marketing description
✓	Product length	✓	Image
✓	Product width	✓	Licensing Indicator
✓	Product height	✓	Product Authorization Required indicator

The following image illustrates a product data sheet which contains many of the DataPaq Select data elements:

The image shows a product data sheet for a Compaq Evo Notebook N610c. It includes a product image, a standard description, a table of identifiers (TD Part #, Manufacturer #, UPC #, MSRP, Status), and a full marketing description. Orange callout boxes point to specific elements: 'Product Line / Model' points to the product name; 'Standard Description' points to the technical specifications; 'Image' points to the laptop image; 'Included' points to the table of identifiers; and 'Marketing Description' points to the full description text.

Product Image Details

Below is detailed list of the number of images in each product category. This data is subject to change as new products and images are added and old products are discontinued.

	Category	Products with specific image	Total products	%
AA	Desktops & Servers	1064	1071	99%
AB	Notebooks	712	712	100%
AC	Handhelds	49	49	100%
AD	Processor Upgrades	135	384	35%
AE	Motherboards	280	295	95%
AF	System Cabinets	225	227	99%
AG	UPS & Power Devices	1161	2177	53%
AH	System & Power Cables	501	742	68%
AI	Port Expansion	61	95	64%
AJ	System Accessories	571	964	59%
AK	System Service & Support	16	271	6%
BA	RAM	537	1702	32%
BD	Flash Memory	217	535	41%
BE	Read-Only Memory	19	85	22%
BF	Memory Adapters	134	164	82%
CA	Hard Drives	462	710	65%
CC	Disk Drives	531	685	78%
CD	Tape Drives	477	599	80%
CE	Network Storage	62	64	97%
CF	Removable Media	367	737	50%
CG	Storage Adapters	268	364	74%
CH	Storage Cables	238	308	77%
CI	Storage Cabinets	286	302	95%
CJ	Storage Accessories	41	258	16%
CK	Storage Service & Support	3	1062	0%

	Category	Products with specific image	Total products	%
DA	Keyboards	175	198	88%
DB	Pointing Devices	165	186	89%
DC	Game Controllers	20	20	100%
DD	Scanners	107	112	96%
DE	Bar Code Readers	36	45	80%
DG	PC & Network Cameras	83	83	100%
DH	Input Adapters	73	85	86%
DI	Input Cables	74	83	89%
DJ	Input Accessories	63	199	32%
DK	Input Service & Support	1	47	2%
EA	Monitors	249	264	94%
EC	Projectors	128	128	100%
ED	Printers	575	581	99%
EE	Audio Output	5	5	100%
EF	Video Cards	130	167	78%
EG	Sound Cards	10	10	100%
EH	Output Cables	200	241	83%
EI	Printer Consumables	581	1260	46%
EJ	Output Accessories	337	831	41%
EK	Output Service & Support	39	441	9%
FA	Modems	398	735	54%
FB	Video Conferencing	27	30	90%
FC	Concentrators & Multiplexers	241	286	84%
FD	Repeaters & Transceivers	687	973	71%
FE	Hubs & Switches	1246	1527	82%
FF	Bridges & Routers	620	703	88%
FG	Network Devices	1335	1575	85%
FH	Network Adapters	1219	2849	43%
FI	Network Cables	1300	1686	77%
FJ	Network Accessories	345	909	38%
FK	Network Service & Support	16	2820	1%
GA	Operating Systems	417	3110	13%
GB	Applications	3642	75939	5%
GC	Software Service & Support	315	8760	4%
HA	Reference Material	325	1011	32%
HB	Training Courses	45	300	15%
JA	Televisions	26	26	100%
JB	VCRs	3	3	100%
JD	Camcorders & Digital Cameras	148	148	100%
JI	Combined AV Devices	8	8	100%
KA	Home Audio	3	3	100%
KB	Portable Audio	43	43	100%
KD	Speakers	68	71	96%
KE	Headsets & Microphones	169	171	99%
LB	Lenses	66	78	85%
LC	Flashes	10	10	100%
LF	Filters	7	7	100%
MB	Tripods	5	5	100%

	Category	Products with specific image	Total products	%
MC	AV Blank Media	17	18	94%
MD	AV Furniture	27	43	63%
ME	Carrying Cases	83	95	87%
MF	Remote Controls	18	27	67%
MG	Power Devices & Batteries	133	173	77%
MH	Cables	145	159	91%
MI	Accessories	70	99	71%
MJ	Service & Support	1	7	14%
OA	Multifunction & Office Machines	95	95	100%
PA	Telephones	80	80	100%
PG	GPS Kits	2	2	100%

Other E-commerce Services

DataPaq Select is part of a suite of product data services provided by Tech Data which can be used to power your web-site and drive maximum sales. Other services available that can be integrated with DataPaq Select include the following:

- XML (Extensible Markup Language) which enables you to retrieve pricing and availability information, submit orders to Tech Data, and obtain detailed shipping and invoice information through Internet-based document exchange.
- EDI (Electronic Data Interchange) is used to provide the price of goods and services in the form of an electronic catalog. Files are made available in industry-standard EDI formats on a daily basis to customers participating as trading partners with Tech Data.

The following table describes the product data available from each of these sources:

	Content Description	DataPaq Select	XML	EDI 832
G e n e r a l	TD part number	X	X	X
	Reseller part number			X
	Manufacturer name	X		X
	Manufacturer part number	X	X	X
	Tech Data vendor code			X
	Tech Data vendor name	X		X
P r i c e & A v a i l	Reseller cost		X	X
	Tech Data list price			X
	MSRP	X		X
	Quantity available		X	EDI 846
	ETA			EDI 846
	Commercial promoted price and expiration	X	X	X
	Commercial promotion description	X		X
	Government promotion price & expiration	X	X	X
P r o d u c t I n f o	Tech Data product description	X		
	Item Status	X		X
	Tech data internal commodity code and description			X
	UPC code	X		X
	Item shipping dimensions			
	Width of item	X		X
	Length of item	X		X
	Height of item	X		X
	Cube of item	X		
	Weight of item	X		
	Class/Category	X		
	Manufacturer/model	X		
	Standardized description	X		
	Marketing description	X		
	Image	X		
	Authorization indicator	X		
	Licensing indicator	X		
	Vendor Drop Ship indicator	X		
	Product note	X		
	Product line	X		

Obtaining DataPaq Select Files

Automating the Download Process

To download the DataPaq Select data files into your own environment you will need to obtain the executable [GetProd.exe](#) from Tech Data's web site.

1. Enter the following URL into your web browser:
<http://www.techdata.com/reseller/secure/commerce/download/getprod.aspx>
2. You will be prompted to enter a valid user ID and password
3. Select the link "download GetProd.exe"
4. You will be prompted for the remaining steps

Important! You must have a valid Tech Data Electronic Commerce ID and password to access the secured areas of Tech Data's web site. If you do not have a valid user name and password, then please contact your company's Master User who will be able to set up credentials for you or identify someone else in your company who can access the web site and download this file. If you are not certain as to who your Master User is, then please contact the EC Help Desk and they will be able to identify that person for you.

Important! If you have previously downloaded GetProd in order to automate downloading Price and Product files, you must download the latest version of the executable. This revised version will allow you to download either Price or DataPaq Select files. The older version that you might already have on your batch machine will only download Price files.

GetProd accepts specifications for five parameters which are supplied on the command line. Two of the parameters are required; failure to supply them displays a help screen. The required parameters are a valid Tech Data Electronic Commerce ID which is authorized to download DataPaq Select and a corresponding Password.

The five parameters accepted by GetProd are as follows:

1. Tech Data Electronic Commerce ID (mandatory) - This is the Electronic Commerce ID which was assigned to your company at the time you signed up for the DataPaq Select service. This ID cannot be used to access the secured areas on the Tech Data web site or other Tech Data services and is the only ID authorized to download DataPaq Select files.
2. Tech Data Electronic Commerce Password (mandatory) - This is the password assigned with the ID described in paragraph 1. While an initial password is assigned by Tech Data at the time your original agreement is signed, your company's Master User may change this password at any time. At this time, this password will not expire on a pre-determined basis. However, it would be advisable for you to change this password periodically, especially when personnel at your company changes.
3. File to download (mandatory) - This parameter allows you to specify which file to download. For downloading DataPaq Select files, the following values should be used:
 - DataPaqSelect.zip
 - DataPaq_Price.zip
4. File type to download (optional) - If using a proxy server, this value must be specified as "Price". If not using a proxy server, this value can be omitted.
5. Proxy (optional) - This parameter should be specified if you access the Internet via a proxy server. The address of the proxy should be specified as a standard Internet address, e.g. "127.127.127.127".

Examples:

```
GetProd bjones xyz789 DataPaqSelect.zip
```

(Using a proxy server)

GetProd bjones xyz789 DataPaqSelect.zip Price 127.127.127.127

GetProd creates a logfile called GetProd.log in the current directory each time the utility is executed. The log file contains status messages and description(s) of any error messages that may have been generated. In addition, GetProd also returns exit codes (see table below) that can be checked in batch files by using the ERRORLEVEL variable; however, the GetProd.log should be used to get detailed information.

Return Code	Meaning
0	OK
1	Warning, file has already been downloaded
2	Warning, file downloaded is not an .exe or .zip file
3	Error, Electronic Commerce ID and/or password are incorrect and/or not authorized for DataPaqSelect
4	Error, file not found
5	Error, check screen output or log file for message
6	Error, invalid number of parameters. Must supply ID and password
10 or higher	Error connecting to the Internet

Before executing the GetProd utility, be sure that your batch file executes the cd command and changed to the correct receiving directory.

Important! To automate the file update process, you must use an automated scheduling utility such as System Agent (available in the Windows 95 Plus Pack), the "AT" utility available in Windows NT, or a third-party utility (such as "AutoMate 3.6" or "AtNow 1.0").

For more information about the use of these scheduling tools, please review the information available on Tech Data's web site in the "Download" area. Follow these steps to navigate to the correct page:

1. Enter the following URL into your web browser:
<http://www.techdata.com/reseller/secure/commerce/download/getprod.aspx>
2. You will be prompted to enter a valid user ID and password

File Availability

DataPaq Select files are available Monday through Friday by 10:00am Eastern Time on Tech Data's web site. While files may be available earlier in the morning, we cannot guarantee earlier delivery as these files contain data dependent upon internal batch processes as well as delivery of data from external sources.

In order to pull the file as early as possible for processing on your web site, we recommend that you run a process that attempts to download the DataPaq Select file at approximately 10:00am. If no file is found, then try again after 30 minutes and repeat at predetermined intervals until the file is downloaded.

Files will generally be available on this schedule even when holidays occur, but please contact the EC Help Desk for additional information regarding specific holiday scheduling.

File Processing

Monday through Friday DataPaq.zip and DataPaq_Price.zip files will be produced.

If you are using Perl (available as part of the MKS toolkit or from other vendors) to write your download script, the following sample script can be used to create the variable file name and then execute the GetProd utility:

```
$cmd = "GetProd.exe uname pw DataPaqSelect.zip";
print "$cmd\n";
$results = ` $cmd `;
$error = $?;
print "$results\n";
if ($error != 0) {
    die ("\n!!! Error downloading DataPaqSelect.zip!!!\n");
};
print "\n\Downloading DataPaqSelect.zip succeeded\n";
```

Important! These sample scripts provide some ideas for how to handle variable file names and are not intended to represent complete scripts with error-handling, etc. You will need to create scripts that are appropriate for your own environment, operating system, scripting language, etc.

If the file is not yet available from Tech Data's web site, the value 4 (file not found) will be returned by GetProd.exe. In order to obtain the file as soon as it is available, you might want to structure your batch job to execute several times starting at approximately 10:00 am Eastern Time.

Once the zipped file has been downloaded to your local environment, you will need to unzip the file using any commercially available Zip utility, e.g. WinZip or PKZip. The uncompressed download will contain 5 text files which should be loaded into your own database and a number of image files in the JPG format that should be placed on your web-site content server.

You will be responsible for writing the database loading scripts and copying the image files to your content server.

Approximate record counts and file sizes for files included in DataPaqSelect.zip and DataPaq_Price.zip are shown in the following table:

File Name	Number of Rows/Files	Original Size (KB)	Packed Size (KB)
CatDefEZ	120	3	1
CatMaps	190,000	2,000	1
CatStruct	100	1	1
CNETProdInfo	165,000	110,000	11,000
DataPaq	190,000	26,000	3,700
Image files	14,000		
Total Size DataPaqSelect.zip (KB)		350,000	140,000
Price	190,000	2,999	990
Promo	35,000	2728	335
Total Size DataPaq_Price.zip (KB)		5727	1325

Loading DataPaq Select Data

Once the DataPaq Select ZIP file and the DataPaq Price ZIP file have been downloaded and unzipped, they will need to be integrated with prior deliveries of product data and into your own database schema.

The data fields in each file are variable length and are separated by a tab character. You will need to use the tools provided by your database vendor to import the text files into your relational database.

DataPaq Select Tables

The following describes each table that will be populated from your downloaded file:

File Name	Description
CatDefEZ	Contains definitions for Tech Data categories in English (EZ.)
CatMaps	Contains category mappings. Multiple categories may be assigned to a SKU.
CatStruct	Contains category structure definitions.
CNETProdInfo	Contains product information supplied by CNET Channel.
DataPaq	Contains Tech Data product information for all active SKUs in the web catalog.

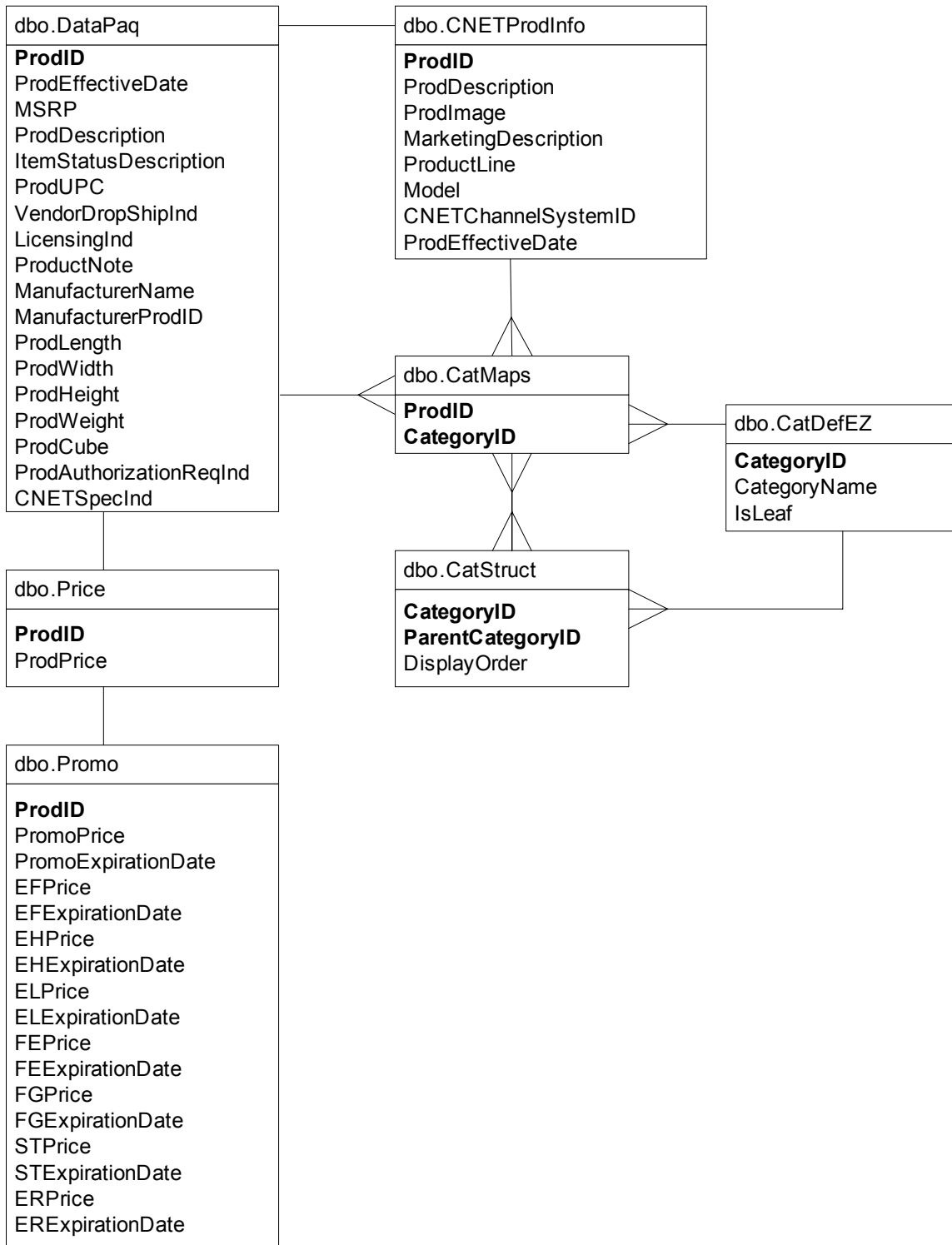
DataPaq Select Pricing Tables

The following describes each table that will be populated from your downloaded file:

File Name	Description
Price	Contains commercial pricing for each SKU.
Promo	Contains promoted commercial and government pricing for each SKU.

Entity-Relationship Diagram

The following Entity-Relationship Diagram depicts the relationships between these tables:



Database Structures

The following table structures for the production data are recommended. Columns that comprise primary keys are bolded.

DataPkg

<u>Column Name</u>	<u>Type</u>	<u>Length</u>	<u>Prec</u>	<u>Scale</u>	<u>Nullable</u>
ProdID	varchar	20			No
ProdEffectiveDate	char	8			No
MSRP	decimal	9	14	2	Yes
ProdDescription	varchar	51			No
ItemStatusDescription	varchar	15			No
ProdUPC	varchar	20			Yes
VendorDropShipInd	bit	1			No
LicensingInd	bit	1			No
ProductNote	varchar	50			Yes
ManufacturerName	varchar	25			No
ManufacturerProdID	varchar	20			No
ProdLength	decimal	9	15	3	Yes
ProdWidth	decimal	9	15	3	Yes
ProdHeight	decimal	9	15	3	Yes
ProdWeight	decimal	9	15	3	Yes
ProdCube	decimal	9	15	3	Yes
ProdAuthorizationReqInd	bit	1			No
CNETSpecInd	bit	1			No

CNETProdInfo

<u>Column Name</u>	<u>Type</u>	<u>Length</u>	<u>Prec</u>	<u>Scale</u>	<u>Nullable</u>
ProdID	varchar	20			No
ProdDescription	varchar	2000			No
ProdImage	varchar	10			No
MarketingDescription	text	8000			Yes
ProductLine	varchar	255			Yes
Model	varchar	255			Yes
CNETChannelSystemID	varchar	40			No
ProdEffectiveDate	char	8			No

CatDefEZ

<u>Column Name</u>	<u>Type</u>	<u>Length</u>	<u>Prec</u>	<u>Scale</u>	<u>Nullable</u>
CategoryID	varchar	10			No
CategoryName	varchar	100			No
IsLeaf	bit	1			No

CatMaps

<u>Column Name</u>	<u>Type</u>	<u>Length</u>	<u>Prec</u>	<u>Scale</u>	<u>Nullable</u>
ProdID	varchar	20			No
CategoryID	varchar	10			No

CatStruct

<u>Column Name</u>	<u>Type</u>	<u>Length</u>	<u>Prec</u>	<u>Scale</u>	<u>Nullable</u>
ParentCategoryID	varchar	10			No
CategoryID	varchar	10			No
DisplayOrder	int	4			Yes

Price

<u>Column Name</u>	<u>Type</u>	<u>Length</u>	<u>Prec</u>	<u>Scale</u>	<u>Nullable</u>
ProdID	varchar	20			No
ProdPrice	decimal	9	14	2	No

Promo

<u>Column Name</u>	<u>Type</u>	<u>Length</u>	<u>Prec</u>	<u>Scale</u>	<u>Nullable</u>
ProdID	varchar	20			No
PromoPrice	decimal	9	14	2	Yes
PromoExpirationDate	char	8			Yes
EFPrice	decimal	9	14	2	Yes
EFExpirationDate	char	8			Yes
EHPrice	decimal	9	14	2	Yes
EHExpirationDate	char	8			Yes
ELPrice	decimal	9	14	2	Yes
ELExpirationDate	char	8			Yes
FEPrice	decimal	9	14	2	Yes
FEExpirationDate	char	8			Yes
FGPrice	decimal	9	14	2	Yes
FGExpirationDate	char	8			Yes
STPrice	decimal	9	14	2	Yes
STExpirationDate	char	8			Yes
ERPrice	decimal	9	14	2	Yes
ERExpirationDate	char	8			Yes

Using DataPaq Select

Once you have loaded the DataPaq Select data into staging tables in your database environment, you will be able to start integrating detailed product specifications into your web-site.

The following describes the data elements included in DataPaq Select:

DataPaq

<u>Column Name</u>	<u>Description</u>
ProdID	Unique part number assigned by Tech Data; used to join to other item-level tables.
ProdEffectiveDate	The date on which item record was last updated by Tech Data. This date may be used to determine which records in the DataPaq table should be updated.
MSRP	Manufacturers suggested retail price.
ProdDescription	Short item description used in Tech Data's internal systems; many words are abbreviated
ItemStatusDescription	Tech Data's item status, e.g. new, discontinued, etc.
ProdUPC	Item UPC code.
VendorDropShipInd	A value of 1 indicates that an item may be vendor drop-shipped, a value of 0 that it may not be vendor drop-shipped.
LicensingInd	A value of 1 indicates that an item is a license, a value of 0 that it is not a license.
ProductNote	Tech Data supplied important item note.
ManufacturerName	Manufacturer name.
ManufacturerProdID	Manufacturer part number.
ProdLength	Item length in inches.
ProdWidth	Item width in inches.
ProdHeight	Item height in inches.
ProdWeight	Item weight in pounds.
ProdCube	Item volume in cubic feet.
ProdAuthorizationReqInd	A value of 1 indicates that an item requires vendor authorization, a value of 0 that it does not require vendor authorization.
CNETSpecInd	A value of 1 indicates that a record for this item exists in the CNETProdInfo table, a value of 0 that there is no CNET Channel supplied product information for this item.

CNETProdInfo

<u>Column Name</u>	<u>Description</u>
ProdID	Unique part number assigned by Tech Data; used to join to other item-level tables.
ProdDescription	CNET Channel supplied item description.
ProdImage	Name of associated image file. Image files may be associated with multiple products.
MarketingDescription	CNET Channel supplied marketing description.
ProductLine	Manufacturer designated product line name.
Model	Manufacturer designated model name.
CNETChannelSystemID	Unique CNET Channel assigned SKU number
ProdEffectiveDate	The date on which item record was last updated by CNET Channel. This date may be used to determine which records in the CNETProdInfo table should be updated.

CatDefEZ

<u>Column Name</u>	<u>Description</u>
CategoryID	Unique category ID generated by Tech Data; used to join to other category-level tables.
CategoryName	Category description.
IsLeaf	A value of 1 indicates that a category is a leaf, a value of 0 that it is a top category.

CatMaps

<u>Column Name</u>	<u>Description</u>
ProdID	Unique part number assigned by Tech Data; used to join to other item-level tables. Items may be assigned to more than one category.
CategoryID	Unique category ID generated by Tech Data; used to join to other category-level tables.

CatStruct

<u>Column Name</u>	<u>Description</u>
ParentCategoryID	Unique category ID generated by Tech Data; used to join to other category-level tables. Categories may be assigned to multiple parent categories.
CategoryID	Unique category ID generated by Tech Data; used to join to other category-level tables.
DisplayOrder	Tech Data suggested display order.

Price

<u>Column Name</u>	<u>Description</u>
ProdID	Unique part number assigned by Tech Data; used to join to other item-level tables.
ProdPrice	Unpromoted commercial price.

Promo

<u>Column Name</u>	<u>Description</u>
ProdID	Unique part number assigned by Tech Data; used to join to other item-level tables.
PromoPrice	Commercial promoted price.
PromoExpirationDate	Commercial promoted price expiration date.
EFPrice	Education – Student, Faculty, Staff promoted price.
EFExpirationDate	Education – Student, Faculty, Staff promoted price expiration date.
EHPrice	Education – Higher promoted price.
EHExpirationDate	Education – Higher promoted price expiration date.

ELPrice	Education – Lower promoted price.
ELExpirationDate	Education – Lower promoted price expiration date.
FEPrice	Education – Federal promoted price.
FEExpirationDate	Education – Federal promoted price expiration date.
FGPrice	Education – Federal GSA promoted price.
FGExpirationDate	Education – Federal GSA promoted price expiration date.
STPrice	Education – State promoted price.
STExpirationDate	Education – State promoted price expiration date.
ERPrice	Education – E-rate promoted price.
ERExpirationDate	Education – E-rate promoted price expiration date.